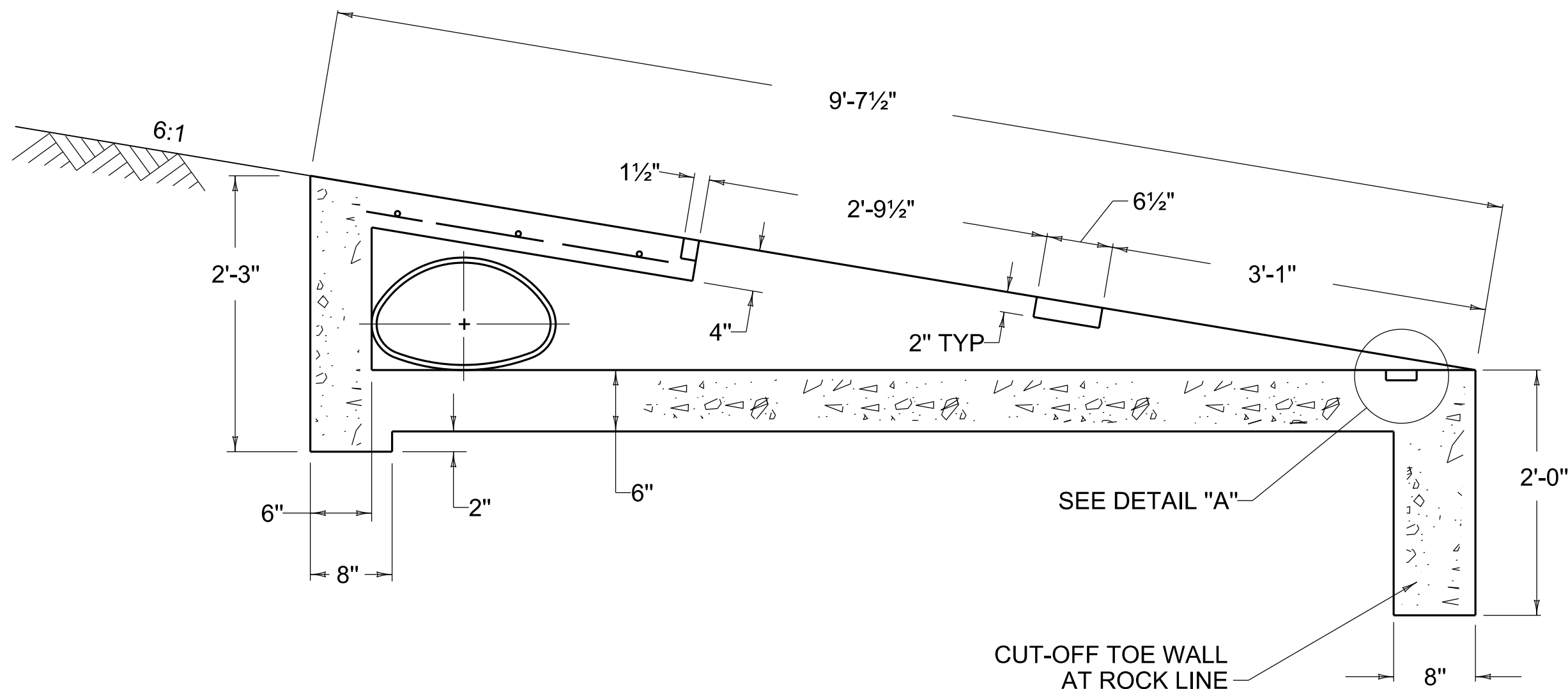
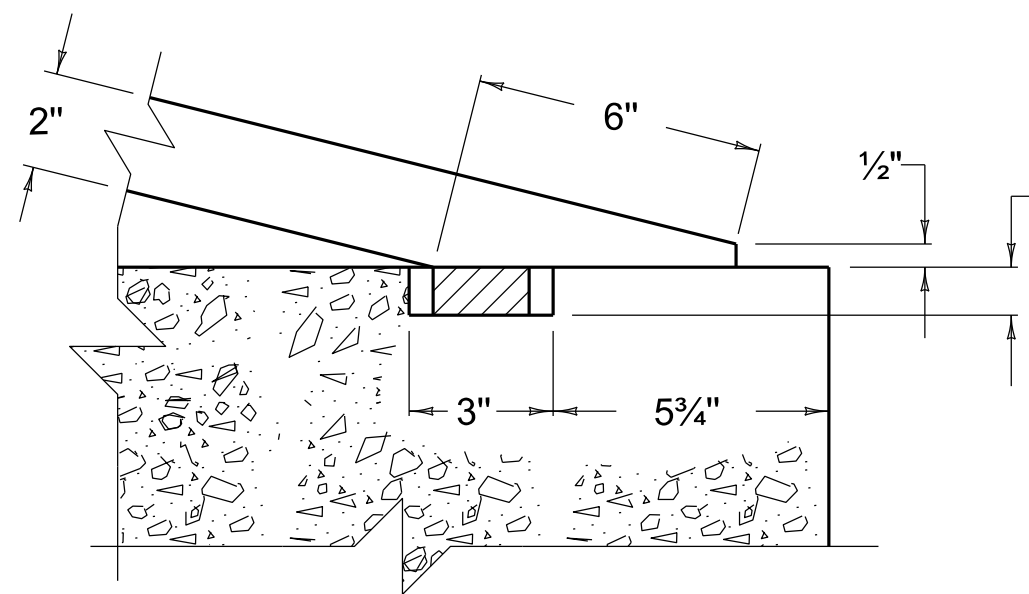


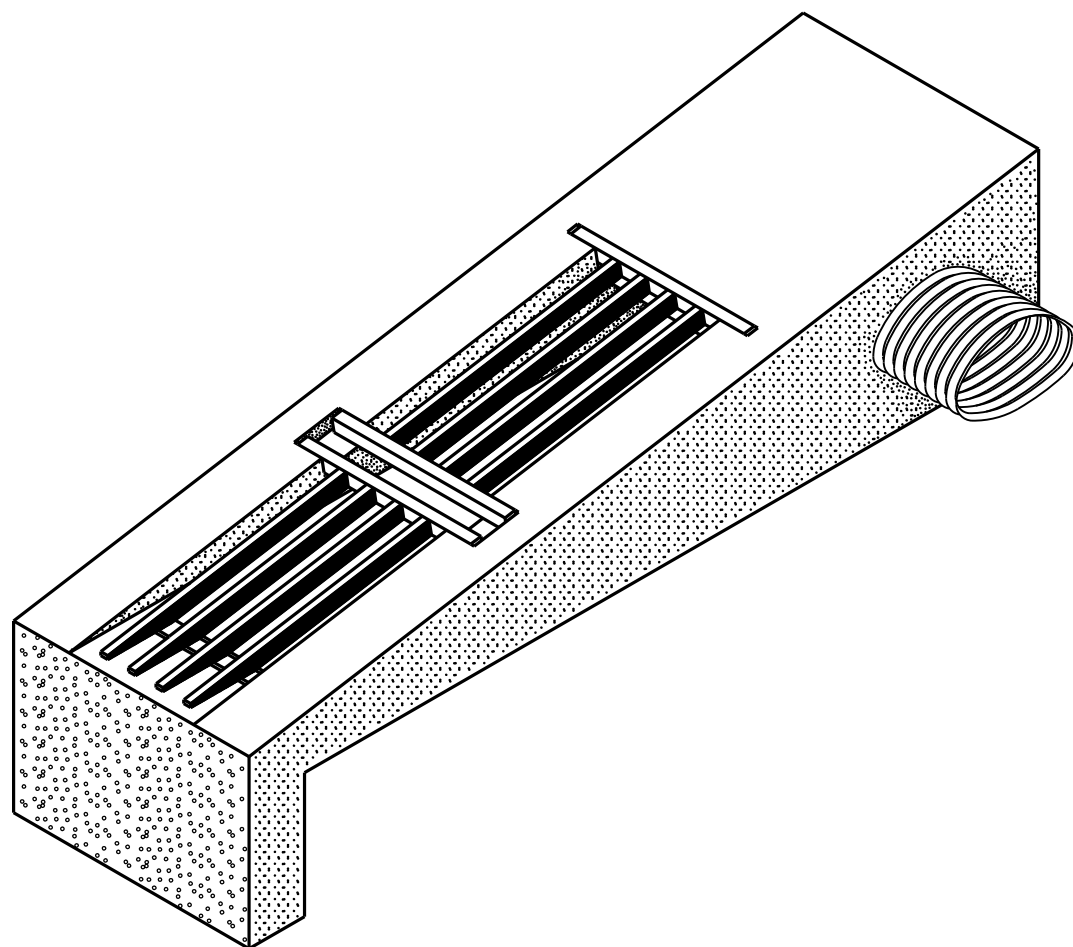
PLAN VIEW



SECTION A-A



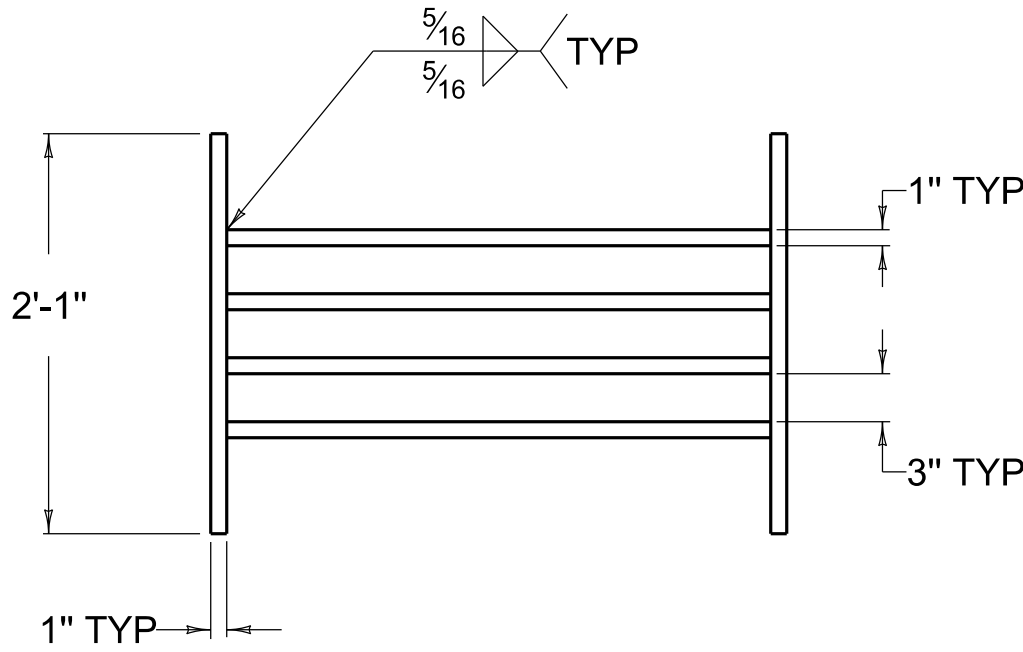
DETAIL "A"



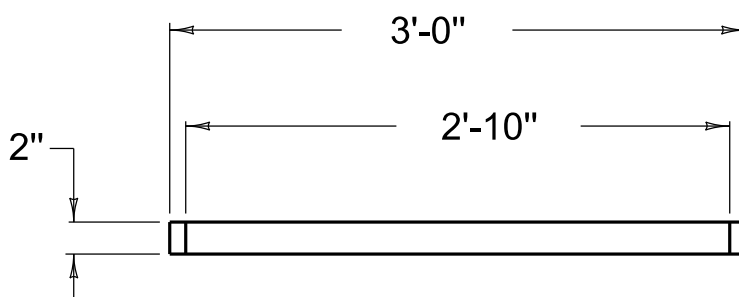
ISOMETRIC VIEW

~ NOTES ~

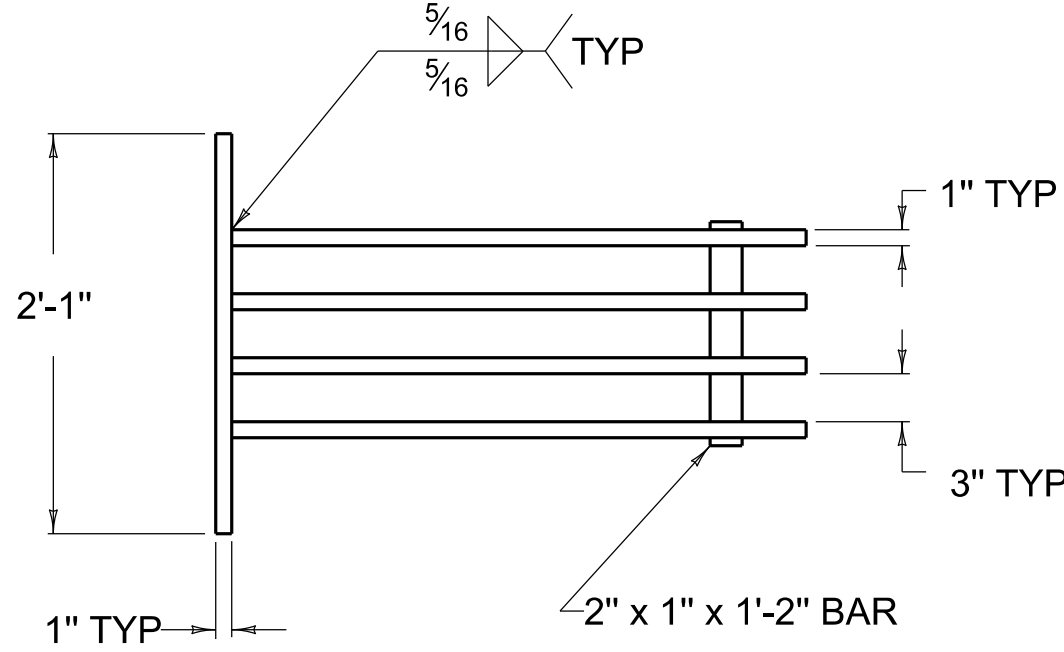
- BID ITEM AND UNIT TO BID**
SLOPED BOX INLET-OUTLET TYPE 2 EACH
1. THE UNIT PRICE BID FOR EACH STRUCTURE SHALL INCLUDE ALL CONCRETE, STRUCTURAL STEEL GRATINGS, STEEL REINFORCEMENT, EXCAVATION, LABOR, AND ALL OTHER INCIDENTALS NECESSARY FOR ITS CONSTRUCTION AS DETAILED ON THIS SHEET.
 2. PRIMARY USE 6:1 DEPRESSED MEDIAN LOCATION.
 3. PIPE SHALL BE METAL PIPE ARCH (15" EQUIV. ROUND).



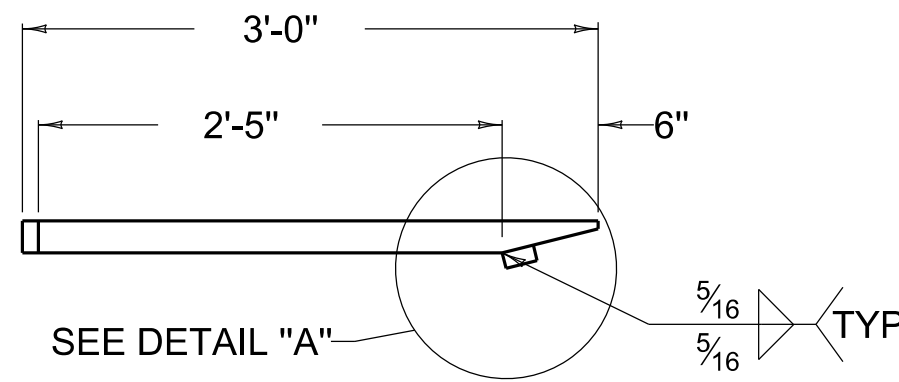
GRATE NO. 1
PLAN VIEW



GRATE NO. 1
SIDE ELEVATION



GRATE NO. 2
PLAN VIEW



GRATE NO. 2
SIDE ELEVATION

APPROXIMATE QUANTITIES				
CLASS "A" CONC.	GRATE	LBS. STRUCTURAL STEEL		STEEL REINF.
CU. YDS.	NUMBER	EACH GRATE	TOTAL LBS.	LBS.
1.1	1	106	206	8
	2	100		



COMMONWEALTH OF KENTUCKY
DEPARTMENT OF HIGHWAYS



INLETS

SLOPED BOX INLET OR OUTLET TYPE 2

STANDARD DRAWING NUMBER
RDB-111-08

DRAINAGE

REVISION DATE: 12/01/2015
REVISION NUMBER: 0

SUBMITTED 12-01-2015
DIVISION DIRECTOR

APPROVED 12-01-2015
STATE HIGHWAY ENGINEER